



HOSE REEL IRRIGATION

DRIVE MODE: WATER TURBINE

www.cyulin.net



① NO.2603, South Tower of Mingshi caifu, zhongshan square, DaLian, China

② NO.128, Yingshun Road, Lvshunkou District, Dalian City, Liaoning Province, China



0086-411-39965069/79

0086-15842497638



www.cyulin.net

yulinirrigation@hotmail.com





China Yulin Irrigation Equipment Co., Ltd. is a leading manufacturer of agricultural irrigation equipment in China. As an OEM manufacturer we have supplied more than 1,000 large scale irrigation projects between 2000 to 2008 to the American irrigation company. We are the only Chinese manufacturer to achieve their certification on technology, manufacturing process, management standards and quality assurance.

From 2009 Yulin has marketed irrigation equipment under the brand HUAXINGYULIN and has developed into a major supplier to industry and the Chinese Government through large government project tenders.

The factory located in the Lvshunkou District of Dalian City, China. The manufacturing plant covers an area of 35,000 square meters with the whole plant covering 45,000 square meters with a total investment of 40million RMB. Yulin has built a new production plant with research and development at its heart. With modern advanced manufacturing equipment and rigorous quality control procedures Yulin irrigation equipment offers quality and lifespan on a par with American products.

We supply advanced irrigation equipment, professional installation teams, high efficiency irrigation programs, and timely after sales service for customers all over the world.

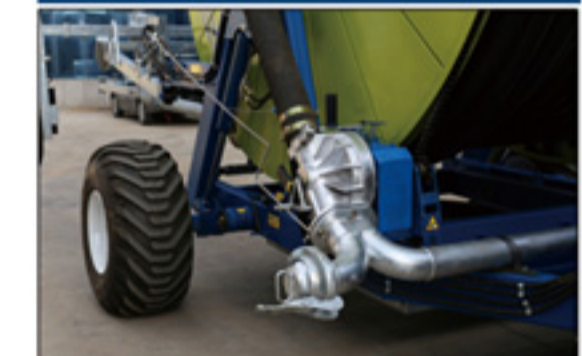
China Yulin Irrigation Equipment Co., Ltd. is dedicated to the development of agricultural irrigation areas. We maintain intimate relationships with both our Chinese and international business partners to constantly help improve farmers use of their limited resource - water.



synchronizer



new balance weight structure



integrative water turbine and gearbox



change speed more flexible



original SIMA spray gun from Italy

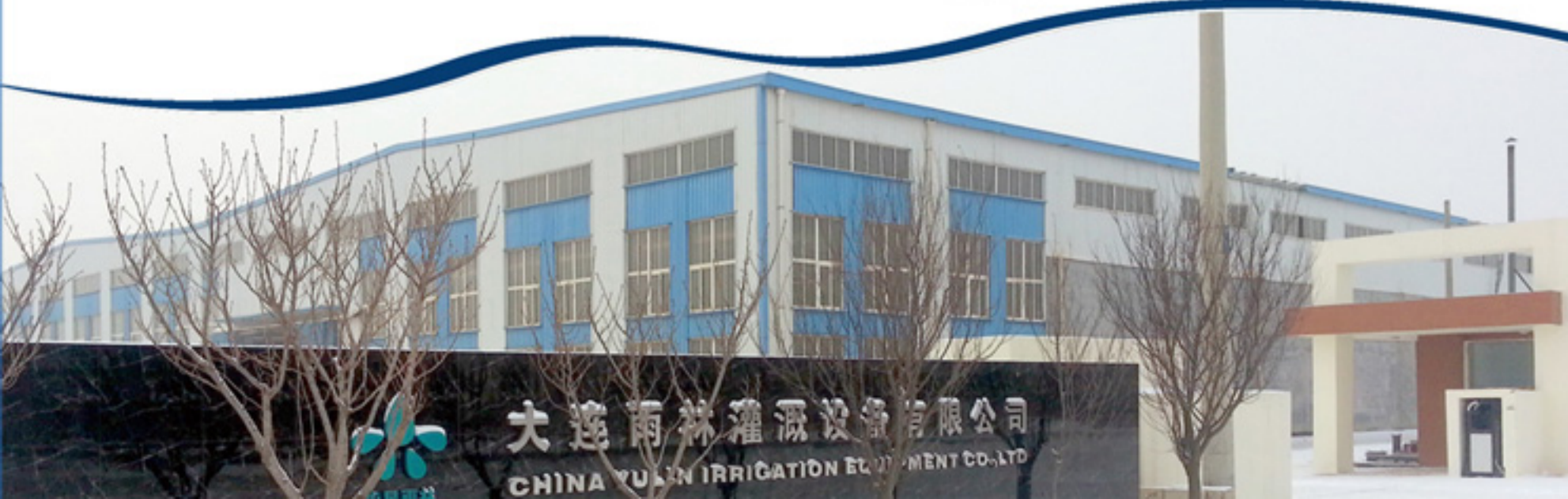


durable rotating chassis

Product advantages:

- Diameter of PE pipe: 100mm, 110mm, 120mm, 130mm, 140mm.
- Length of PE pipe :300m-600m

saving labour cost
improve production





Product advantages:

- Diameter of PE pipe: 50mm, 65mm, 75mm, 85mm, 90mm.
- Length of PE pipe :100m, 150m, 200m, 250m, 300m.



Product advantages:

- Standard boom: 30m Longest boom: 80m.
- Sprinkler stabilization, wind resistance ability is strong.
- Low pressure requirement.
- Sprinkler is uniform, high work efficiency, saving cost.

saving labour cost

improve production



Performance Parameter Table

JP600(two wheel&fixed chassis)			
Diameter	mm	65	75
Length	m	250/300/350	250
Water Flow	m ³ /h	10-21	14-34
Nozzle	mm	12-16	14-20
boom(Optional)	m	24	24

JP700(two wheel&fixed chassis)				
Diameter	mm	65	75	90
Length	m	400/450	300/350	250
Water Flow	m ³ /h	10-21	14-34	25-52
Nozzle	mm	12-16	14-20	16-22
boom(Optional)	m	28	28	28



JP1000(two wheel&hydraulic chassis)						
Diameter	mm	90	100	110	120	125
Length	m	450/500/550	400/450/500	350	300	260
Water Flow	m ³ /h	25-52	27-73	29-78	44-130	44-130
Nozzle	mm	16-22	20-30	22-32	24-34	24-34
boom(Optional)	m	28	48	48	48	48

JP1100(two wheel&hydraulic chassis)				
Diameter	mm	100	110	120
Length	m	550/600	450/480	360
Water Flow	m ³ /h	27-73	29-78	44-130
Nozzle	mm	20-30	22-32	24-34
boom(Optional)	m	48	48	48



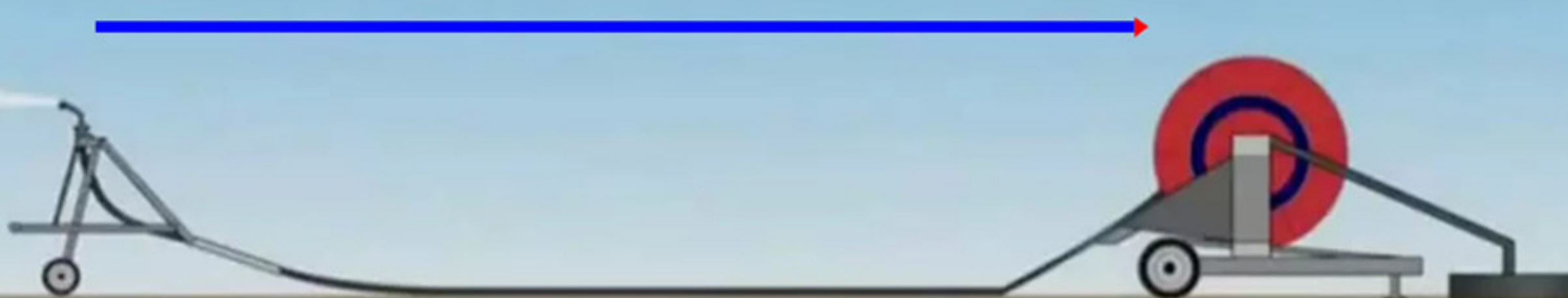
JP800(two wheel&fixed chassis)				
Diameter	mm	65	75	90
Length	m	450	400/450	300/340
Water Flow	m ³ /h	10-21	14-34	25-52
Nozzle	mm	12-16	14-20	16-22
boom(Optional)	m	28	28	28

JP900(two wheel&fixed chassis)					
Diameter	mm	75	90	100	110
Length	m	500/550	350/400	350	300
Water Flow	m ³ /h	14-34	25-52	27-73	29-78
Nozzle	mm	14-20	16-22	20-30	22-32
boom(Optional)	m	28	28	28	28

JP1200(four wheel&hydraulic chassis)							
Diameter	mm	100	110	120	125	140	150
Length	m	650/700	550/600	450/500	400/450/500	400	400
Water Flow	m ³ /h	27-73	29-78	44-130	44-130	52-163	55-180
Nozzle	mm	20-30	22-32	24-34	24-34	26-40	26-44
boom(Optional)	m	48	80	48	80	80	80

JP1400(four wheel&hydraulic chassis)						
Diameter	mm	110	120	125	150	140
Length	m	600/650	550/600	550/600	400	500
Water Flow	m ³ /h	29-78	44-130	52-163	55-180	52-163
Nozzle	mm	22-32	24-34	26-40	26-44	26-40
boom(Optional)	m	80	80	80	80	80

The spinkler moves towards the reel as it irrigates to complete the irrigation.



Ø	Ø diameter nozzle	inlet pressure	range of spray gun	available range	Q mt/h flow	relationship between speed and intensity of irrigation								
						10m	20m	25m	30m	40m	60m	80m		
						rainfall=mm—water								
Ø90	Ø63	14	5	31	55	14.7	26.7	13.4	10.7	8.9	6.7	4.5	3.3	
			6	34	60	16.4	27.5	13.7	11	9.2	6.8	4.6	3.4	
			7	37	66	18	29	14.5	10.9	9.6	7.2	4.8	3.6	
		16	5	32	57	19.4	33.5	16.7	13.4	11.2	8.3	5.6	4.1	
			6	35	62	21.4	34.5	17.2	13.8	11.5	8.6	5.7	4.3	
			7	38	68	23.5	34.5	17.2	13.8	11.5	8.6	5.7	4.3	
	18	5	35	62	25.6	41	20.5	16.5	13.6	10.2	6.8	5.1		
		6	38	67	28.3	42	21	16.9	14	10.5	7	5.2		
		7	40	72	31.3	43.5	21.7	17.4	14.5	10.8	7.2	5.4		
	Ø82	Ø75	20	5	37	66	31.6	48	24	19.1	16	12	8	6
				6	40	72	34	47.5	23.7	18.9	15.8	11.8	7.9	5.9
				7	43	77	38.7	50	25	20	16.6	12.5	8.3	6.2
22			5	39	69	38	55	27.5	22.1	18.3	13.7	9.2	6.8	
			6	42	76	42.4	55.5	27.7	22.3	18.5	13.8	9.2	6.9	
			7	45	80	46.4	58	29	23.2	19.3	14.5	9.6	7.2	
24		5	43	77	45.6	59	29.5	23.7	19.6	14.7	9.8	7.3		
		6	45	81	50.2	62	31	24.8	20.6	15.5	10.3	7.7		
		7	49	87	55.3	63.5	31.7	25.4	21.2	15.8	10.6	7.9		
26		5	46	83	53.4	64.5	32.2	25.7	21.5	16.1	10.7	8		
		6	50	90	59.2	68	33	26.3	22	16.5	11	8.2		
		7	52	94	64.8	69	34.5	27.6	23	17.2	11.5	8.6		
Ø120	Ø100	28	6	53	95	68.5	72	36	28.8	24	18	12	9	
			7	56	101	75.2	74.5	37.2	29.8	24.8	18.6	12.4	9.3	
			8	58	104	81.9	78.5	39.2	31.5	26.2	19.6	13.1	9.8	
		30	6	55	99	79.5	80.5	40.2	32.1	26.8	20.1	13.4	10	
			7	59	106	86.4	81.5	40.7	32.6	27.2	20.3	13.6	10.2	
			8	62	112	94	84	42	33.6	28	21	14	10.5	
	32	6	57	103	89.6	87	43.5	34.8	29	21.7	14.5	10.8		
		7	61	110	98.2	89	44.5	35.7	29.6	22.2	14.8	11.1		
		8	65	116	106.9	92	46	36.8	30.6	23	16.3	11.5		
	34	6	58	104	101	97	48.5	38.9	32.3	24.2	16.1	12.1		
		7	62	112	111	99	49.5	39.6	33	24.7	18.5	12.3		
		8	65	117	120	102.5	51.2	41	34.2	25.6	17.1	12.8		
36	6	61	110	108.8	99	49.5	39.6	33	24.7	16.5	12.3			
	7	65	117	119.3	102	51	40.8	34	25.5	17	12.7			
	8	69	124	130.4	105	52.2	42.1	35	26.2	17.5	13.1			
38	7	72	130	134.2	108.1	54.1	43.3	36	27	18	13.5			
	8	76	137	153	111.8	55.9	44.7	37.3	28	18.6	14			
	9	79	142	164	115.3	57.7	46.1	38.4	28.8	19.2	14.4			